

Mysticetus Commercial Realtime Data Sharing

Conservation Benefits: Reduce Risk of Vessel Strikes on Animals, in certain cases all the way to **Absolute Zero**.

Commercial Benefits: Prevent expensive shutdowns, saving tens of thousands of dollar\$\$ **PER INCIDENT**.

Commercial Requirement: Each developer needs to control when their data is shared, and with whom

North Atlantic Right Whale Vessel Strike Prevention Event

16:17:02 UTC – **Vessel A** is surveying

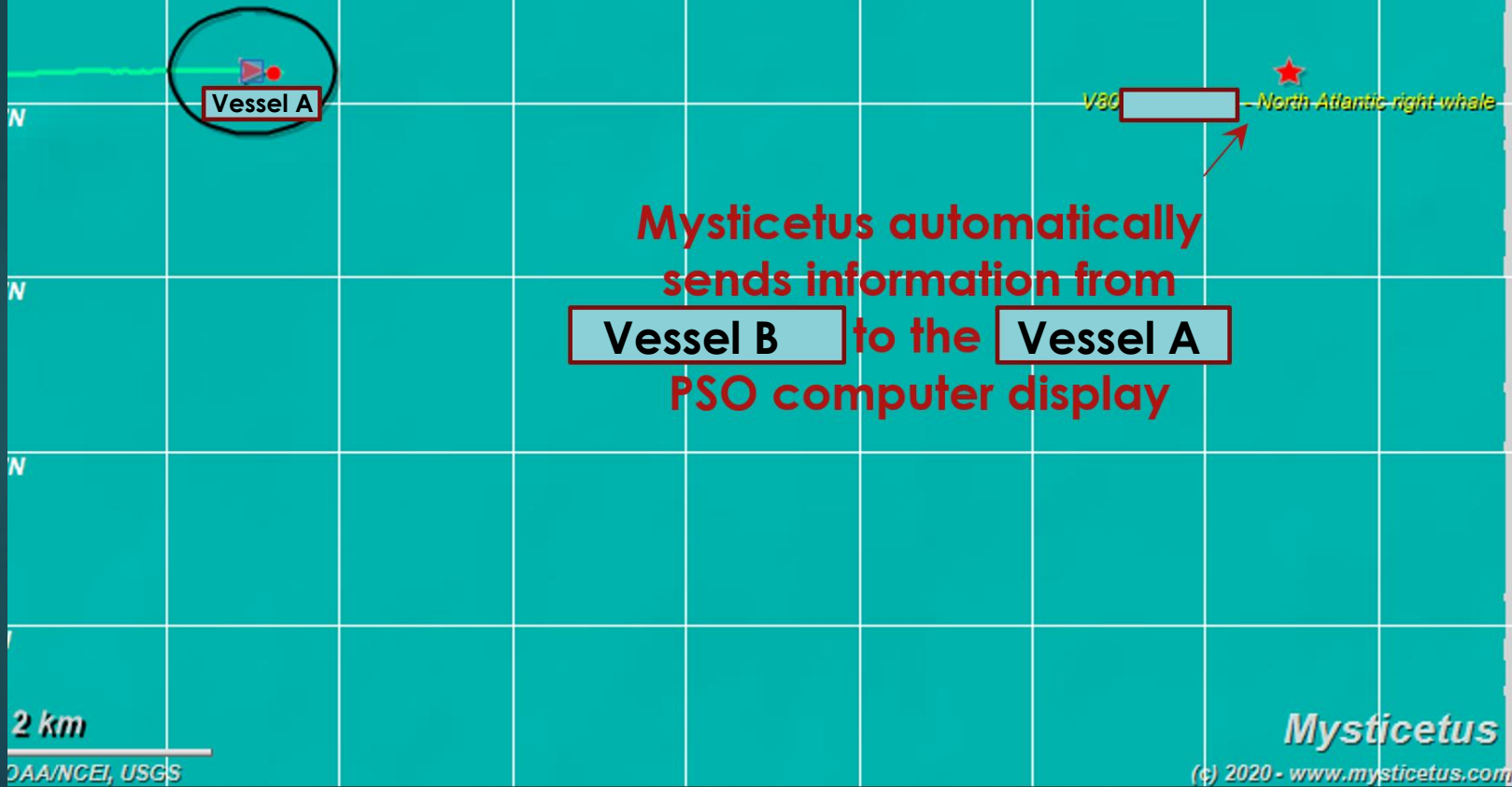


...PSO heads-up map display is fairly
empty...

km

Mysticet

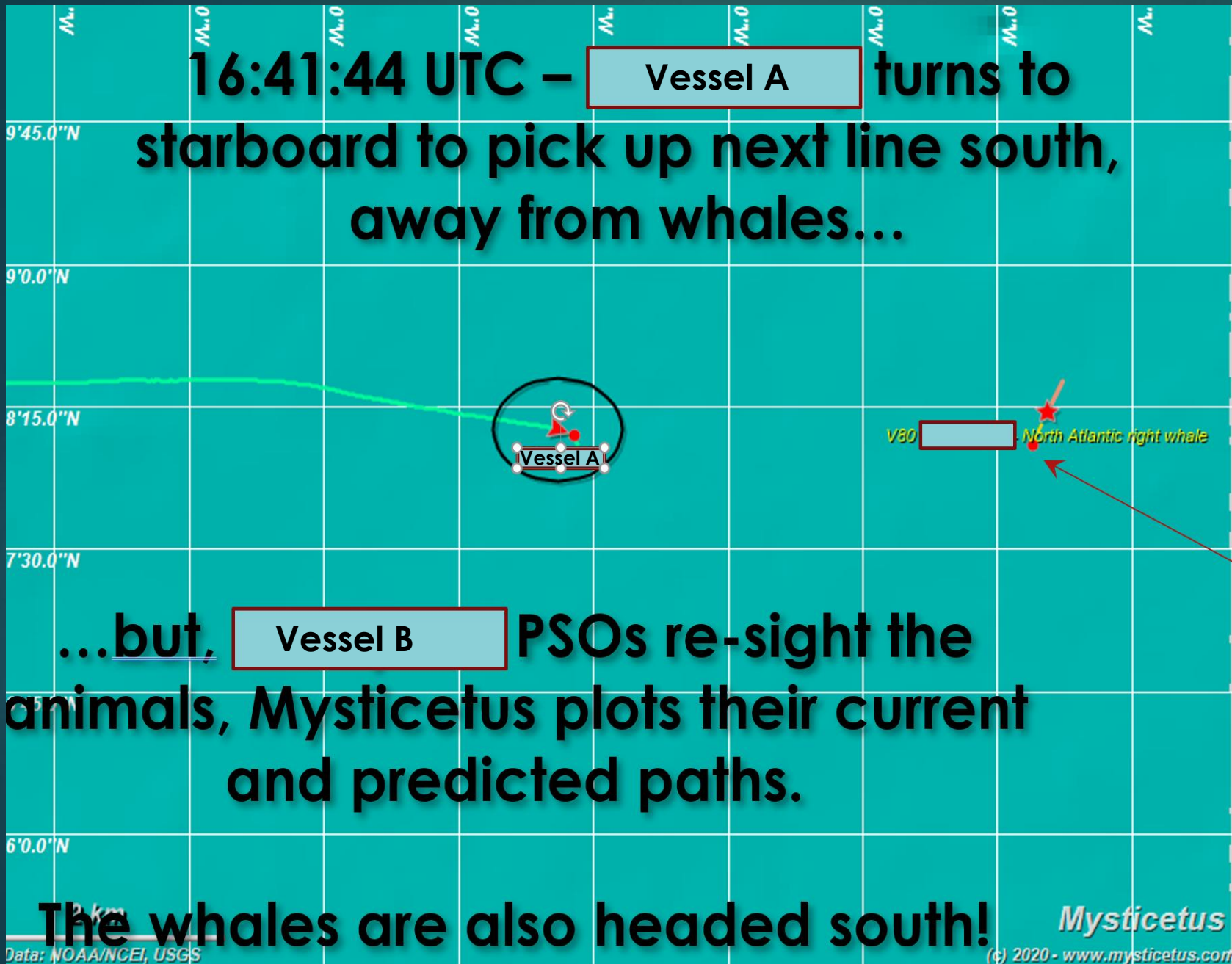
16:17:40 UTC – **Vessel B** PSOs spot two North Atlantic Right Whales



Vessel B is offscreen over here



16:41:44 UTC – **Vessel A** turns to starboard to pick up next line south, away from whales...



...but, **Vessel B** PSOs re-sight the animals, Mysticetus plots their current and predicted paths.

The whales are also headed south!

Mysticetus automatically updates **Vessel A** PSO display with latest information from **Vessel B**

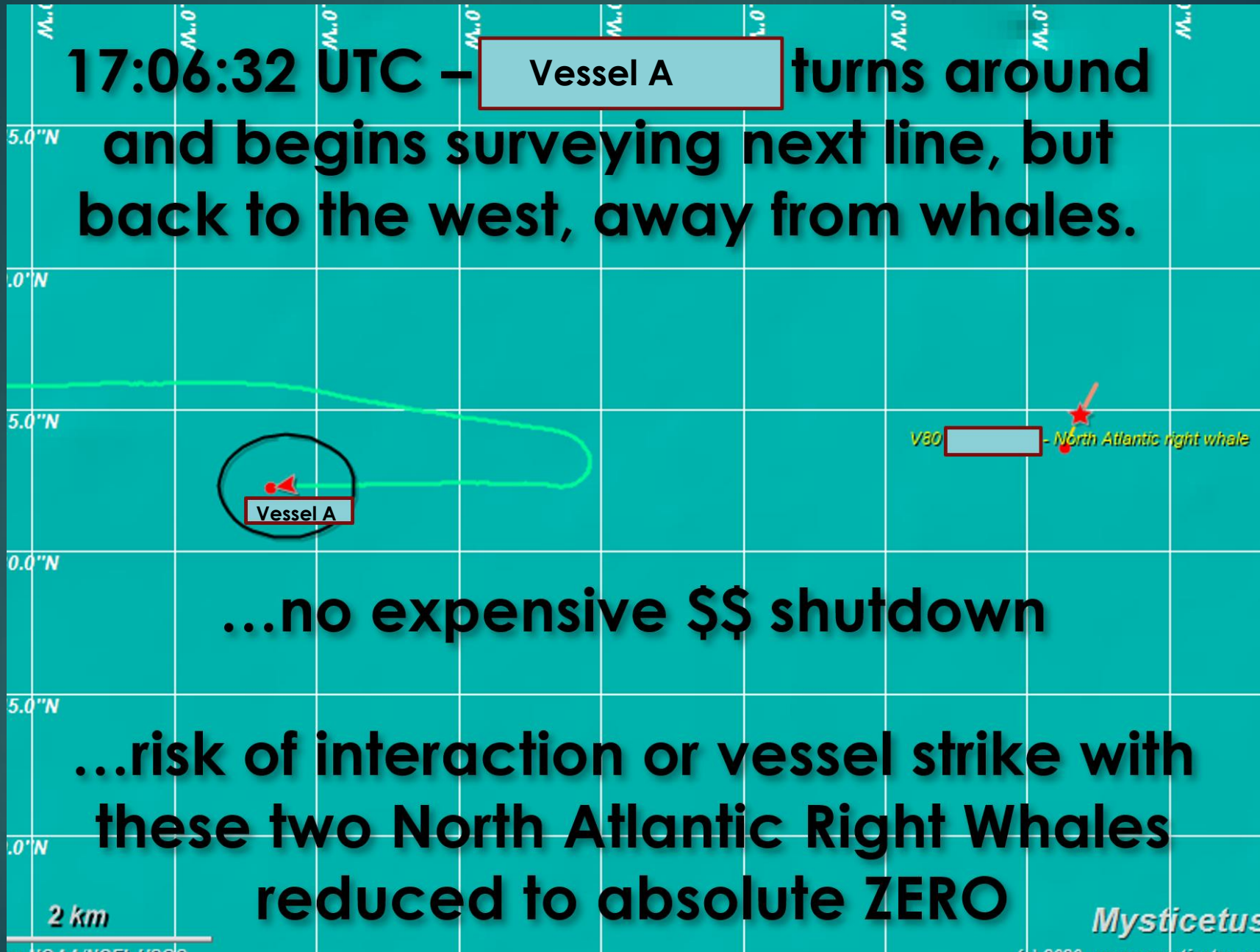
POP QUIZ



HOTSHOT

Two North Atlantic Right Whales are on a **collision course** with your giant, lumbering work boat. What do you do?

17:06:32 UTC – Vessel A turns around and begins surveying next line, but back to the west, away from whales.



...no expensive \$\$ shutdown

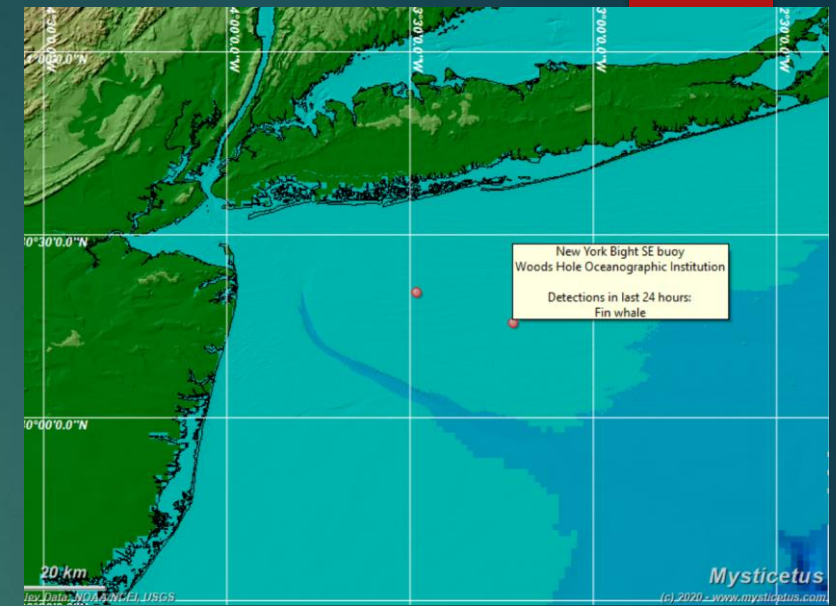
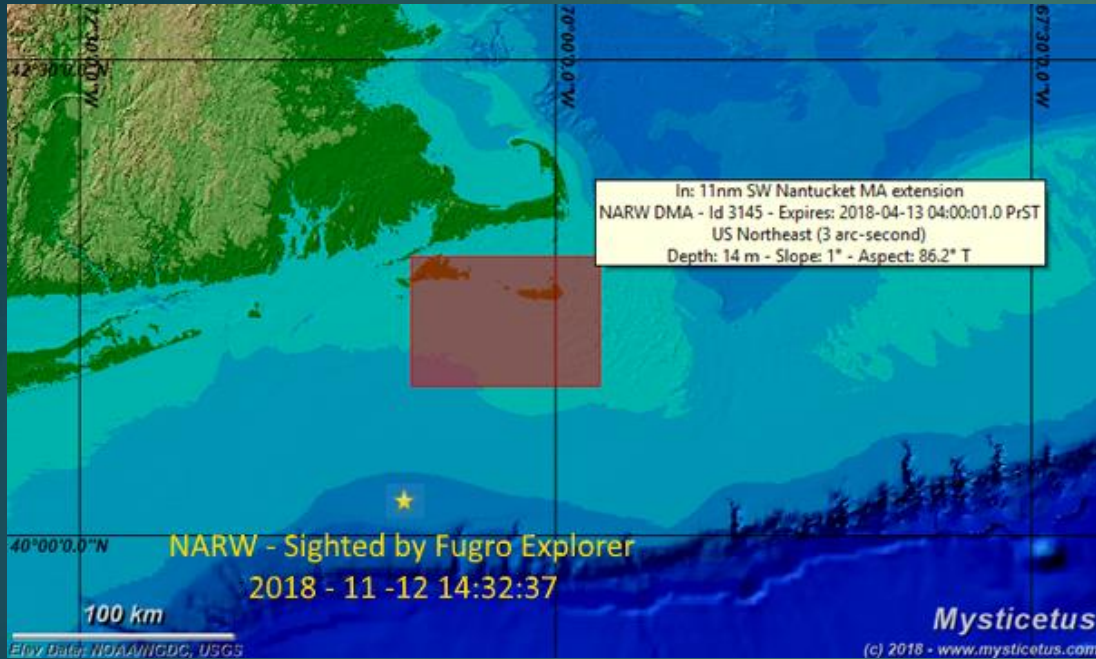
...risk of interaction or vessel strike with these two North Atlantic Right Whales reduced to absolute ZERO

Mysticetus

Mysticetus

Integration of External Data

More and more data feeds over time



- ▶ NOAA Dynamic Management Areas (DMA)
- ▶ Entangled animal tracking
- ▶ Critical sightings are emailed and texted (sms) to project management – instantly
- ▶ Research Gliders/Drones are plotted for PSOs (collision avoidance)
- ▶ AIS Targets
- ▶ 2021: Fishing Gear
- ▶ 2021: Sea Turtle Network
- ▶ 2021: Weather and weather trends

Summary: Instant, Commercial Data Sharing

- ▶ Conservation Benefits:
 - ▶ Vessel strike risk reduction (**multiplies eyes on water**)
 - ▶ Increase in quantity and quality of data for future study
- ▶ Commercial Benefits (\$\$\$):
 - ▶ Prevent certain categories of **expensive** shutdowns
 - ▶ Critical event notification (incl Harassment) to onshore personnel via email and sms texts
- ▶ Multi-level Commercial Data Security
 - ▶ **Developer controls** who shares what, when, and with whom





Thanks!



MYSTICETUS

<https://mysticetus.com>